

# MONITORING STUDIES

DOI: 10.15838/esc.2026.2.104.14

## Public Opinion Monitoring of the State of the Russian Society

Continuing the established tradition of our publication, we present the findings of public opinion monitoring assessments of the state of the Russian society conducted by the Vologda Research Center of the Russian Academy of Sciences (VoIRC RAS) in the Vologda Region<sup>1</sup>.

The following tables and figures show the dynamics of a number of parameters capturing the social well-being and socio-political attitudes of the region's population, based on the latest monitoring wave (April 2026) and covering the period from April 2025 through April 2026 (the last seven surveys, i.e., one year of measurements).

The findings are compared with annual average data for 2000 (the first year of Vladimir Putin's first presidential term), 2007 (the final year of his second presidential term, when the highest ratings of presidential performance were recorded), 2012 (the first year of his third presidential term), 2018 (the first year of his fourth term), and 2023 (the last full year of his fourth term).

Year-on-year dynamics are presented for 2007–2025<sup>2</sup>.

In February–April 2026, the approval rating of the Russian President remained unchanged, standing at 62–64%. The share of negative assessments also remains stable (20–21%)<sup>3</sup>.

Over the past twelve months, the share of positive assessments of the head of state's performance declined from 64 to 61%<sup>4</sup>.

<sup>1</sup> Surveys are conducted six times a year in the cities of Vologda and Cherepovets, and in Babaevsky, Velikoustyugsky, Vozhegodsky, Gryazovetsky, Tarnogsky, Kirillovsky, Nikolsky, and Sheksninsky municipal okrugs of the region. The survey method is a face-to-face questionnaire administered at respondents' places of residence. The sample size is 1,500 people aged 18 and older. The sample is purposive and quota-based. Representativeness is ensured by maintaining appropriate proportions between urban and rural populations, between residents of different types of settlements (rural localities, small and medium-sized towns), and by matching the gender and age structure of the region's adult population. The sampling error does not exceed 3%.

More detailed information on the results of the surveys conducted by VoIRC RAS can be found at <http://www.vsc.ac.ru>.

<sup>2</sup> In 2020, four monitoring waves were conducted. The surveys scheduled for April and June 2020 were cancelled due to the quarantine restrictions imposed during the COVID-19 pandemic.

<sup>3</sup> Here and throughout all tables, figures, and in the text, green shading indicates positive changes, red shading indicates negative changes, and blue shading indicates no change. Since variations of  $\pm 3$  percentage points fall within the margin of sampling error, they are treated as statistically insignificant and are marked in blue.

<sup>4</sup> Here and throughout the text, the boxed section presents the results of a comparative analysis of the survey conducted in April 2026 against the findings of the monitoring wave carried out in April 2025.

How would you assess the current work of...? (% of respondents)

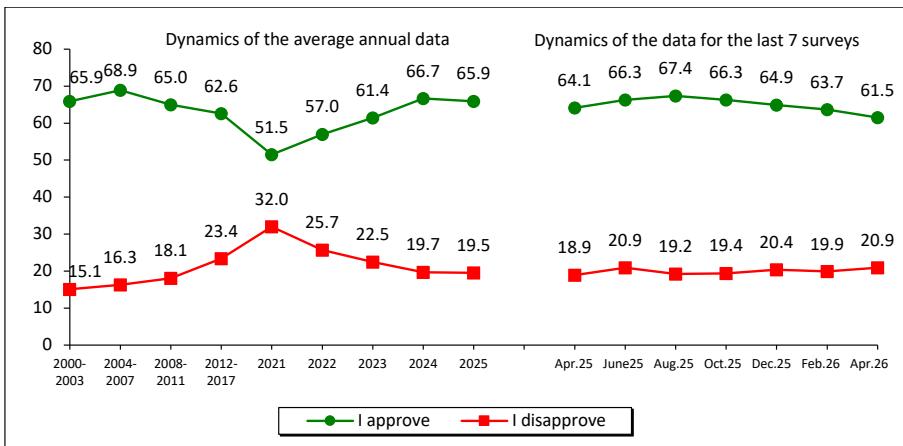
Response	Dynamics of the average annual data										Dynamics of the data for the last 7 surveys							Dynamics (+/-), Apr. 2026 to	
	2000	2007	2012	2018	2021	2022	2023	2024	2025		Apr. 2025	June 2025	Aug. 2025	Oct. 2025	Dec. 2025	Feb. 2026	Apr. 2026	Apr. 2025	Feb. 2026
<b>RF President</b>																			
I approve	66.0	75.3	51.7	66.4	51.5	57.0	61.4	66.7	65.9	64.1	66.3	67.4	66.3	64.9	63.7	61.5	-3	-2	
I disapprove	14.8	11.5	32.6	21.7	32.0	25.7	22.5	19.7	19.5	18.9	20.9	19.2	19.4	20.4	19.9	20.9	+2	+1	
<b>Chairman of the RF Government</b>																			
I approve	–	–	49.6	48.0	39.9	45.4	50.1	54.1	54.4	53.9	53.0	55.1	55.7	54.0	51.1	48.9	-5	-2	
I disapprove	–	–	33.3	31.6	37.6	32.0	27.6	24.8	22.5	22.3	22.9	20.6	23.1	22.2	21.3	22.8	+1	+2	
<b>Vologda Region Governor*</b>																			
I approve	56.1	55.8	41.9	38.4	36.7	40.9	48.1	51.7	42.5	42.9	39.9	41.0	41.8	42.8	40.2	38.2	-5	-2	
I disapprove	19.3	22.2	33.3	37.6	40.5	35.8	30.9	28.4	37.2	34.6	37.2	39.1	41.3	39.3	39.0	41.2	+7	+2	

Green shading indicates positive changes, red shading indicates negative changes, and blue shading indicates no change. Since variations of ±3 percentage points fall within the margin of sampling error, they are treated as statistically insignificant and are marked in blue.

The question wording was: “How do you currently assess the performance of...?” Respondents were then offered a list of government bodies at various levels to evaluate, with the answer options: “fully approve”, “mostly approve”, “mostly disapprove”, “fully disapprove”, “not familiar with the activities”, and “difficult to answer”.

\* On October 31, 2023, by Decree of the President of the Russian Federation, Georgy Yu. Filimonov was appointed Acting Governor of the Vologda Region. In the regional elections held on September 6–8, 2024, G.Yu. Filimonov received 62.3% of the vote and was elected Governor of the Vologda Region.

How would you assess the way that the RF President is handling his job? (% of respondents, VoIRC RAS data)\*



Response	Dynamics (+/-), Apr. 2026 to	
	Apr. 2025	Feb. 2026
I approve	-3	-2
I disapprove	+2	+1

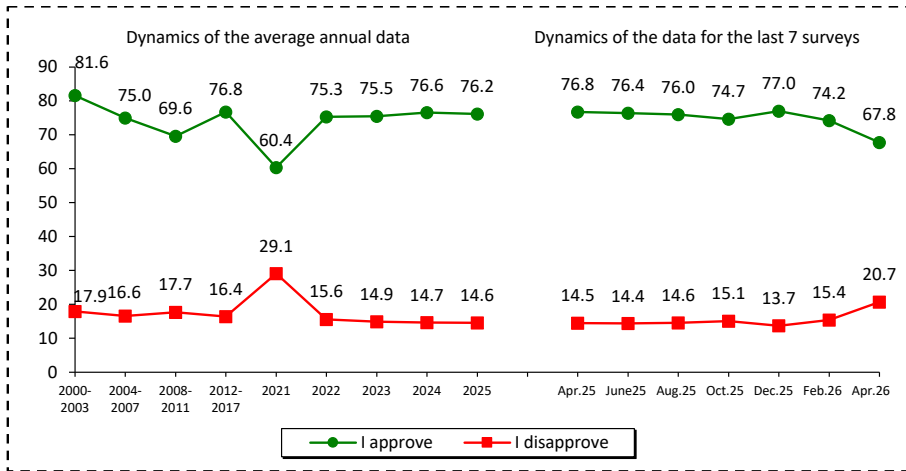
\* Here and throughout all figures, annual average data are presented for 2020, 2021, 2022, 2023, 2024, and 2025, as well as annual average data for the periods 2000–2003, 2004–2007, 2008–2011, and 2012–2017, which correspond to the periods of the presidential terms.

**For reference:**

According to VCIOM data, the approval rating of the Russian President declined from 74 to 68% (by 6 p.p.) over February–April 2026. The share of negative assessments increased from 15 to 21%.

The level of support for the Russian President’s performance declined from 77 to 68% (by 9 p.p.) between April 2025 and April 2026.

Do you approve or disapprove of the way that the RF President is handling his job?  
(% of respondents; VCIOM data)



Response	Dynamics (+/-), Apr. 2026 to	
	Apr. 2025	Feb. 2026
I approve	-9	-6
I disapprove	+6	+5

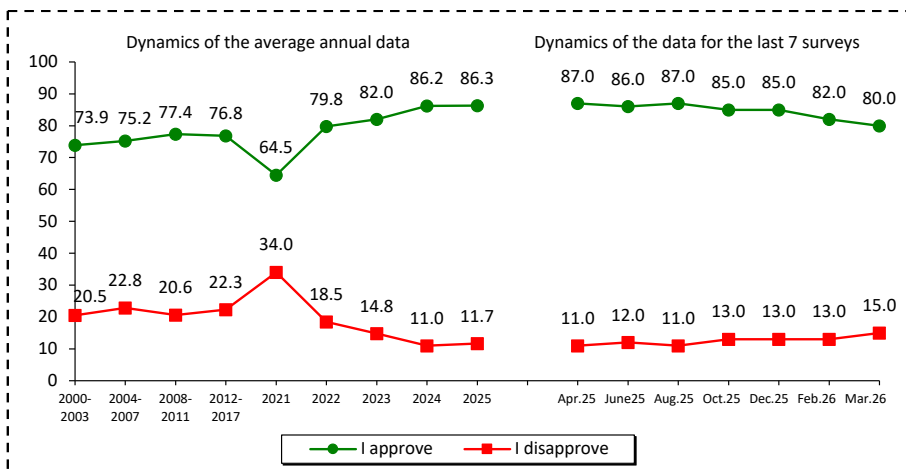
Wording of the question: “In general, do you approve or disapprove of the way that the Russian President is handling his job?”  
Data for April – for one survey: as of April 5, 2026.

Source: VCIOM. Available at: <https://wciom.ru/>

According to nationwide surveys by Levada-Center\*, over the past two months (February–March 2026), positive assessments of the Russian President’s performance stand at 80–82%, while negative assessments amount to 13–15%.

*The approval rating of the head of state fell from 87 to 80% (by 7 p.p.) between April 2025 and March 2026. The share of negative assessments rose by 4 p.p.*

In general, do you approve or disapprove of the way that Vladimir Putin is handling his job as President of Russia? (% of respondents; Levada-Center\* data)



Response	Dynamics (+/-), March 2026 to	
	Apr. 2025	Feb. 2026
I approve	-7	-2
I disapprove	+4	+2

Wording of the question: “In general, do you approve or disapprove of the way that Vladimir Putin is handling his job as President of Russia?”

Source: Levada-Center\*. Available at: <https://www.levada.ru/>

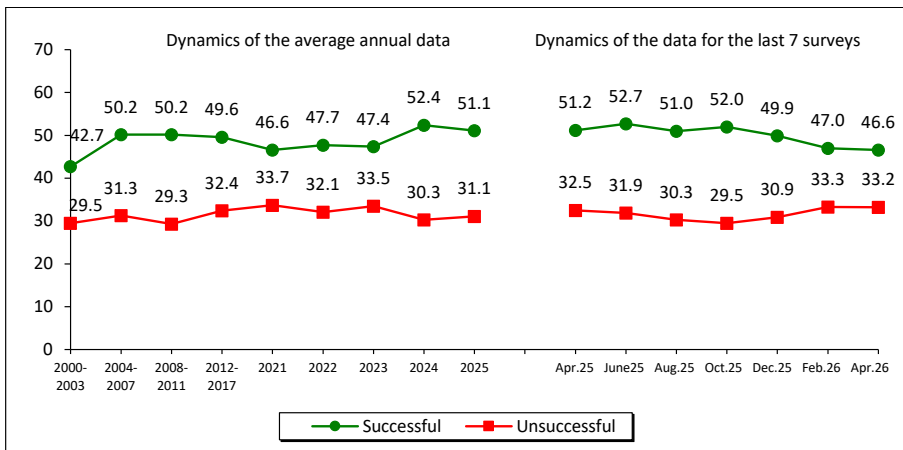
\* Included in the register of foreign agents.

In your opinion, how successful is the RF President in handling challenging issues? (% of respondents; VoIRC RAS data)

The share of the region’s residents who view the head of state’s actions to strengthen Russia’s international standing as successful remained at the same level over the past two months – 47%. The proportion of people holding the opposite view also remained unchanged (33%).

In April 2026, compared with April 2025, the share of positive assessments of the head of state’s performance in strengthening the country’s international position decreased from 51 to 46% (by 5 p.p.).

Strengthening Russia’s international standing

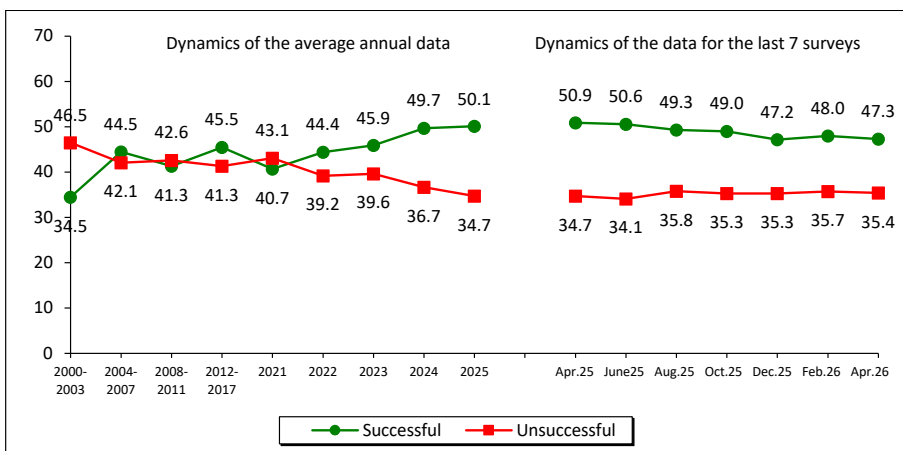


Response	Dynamics (+/-), Apr. 2026 to	
	Apr. 2025	Feb. 2026
Successful	-5	0
Unsuccessful	+1	0

Between February and April 2026, the share of positive assessments by the region’s residents of the Russian President’s efforts to maintain order in the country remained unchanged at 47–48%. The share of negative assessments also stayed at the previous level (35%).

Over the past twelve months, the proportion of positive assessments declined from 51% to 47% (by 4 p.p.).

Maintaining order in the country

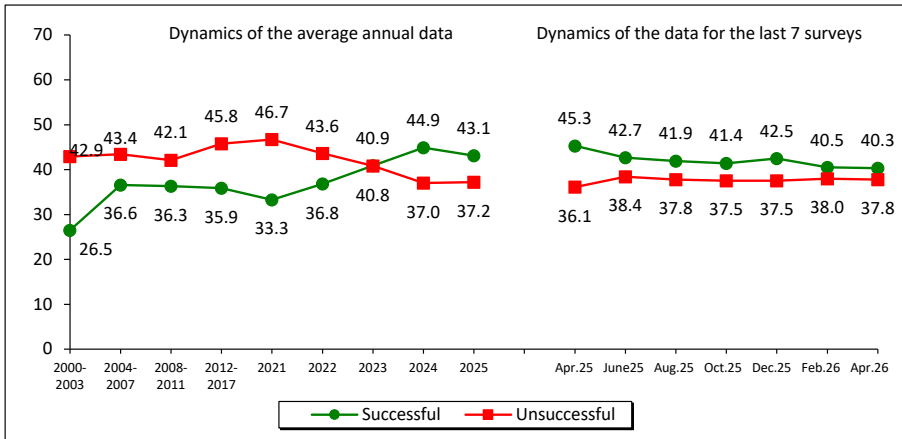


Response	Dynamics (+/-), Apr. 2026 to	
	Apr. 2025	Feb. 2026
Successful	-4	-1
Unsuccessful	+1	0

In April 2026, compared with February 2026, the share of the region’s residents who positively assess the Russian President’s performance in protecting democracy and strengthening citizens’ freedoms did not change, nor did the share of negative assessments.

Over the year of measurements, the share of those approving of the head of state’s work in protecting democracy and strengthening citizens’ freedoms decreased from 45 to 40%.

Protecting democracy and strengthening citizens’ freedoms

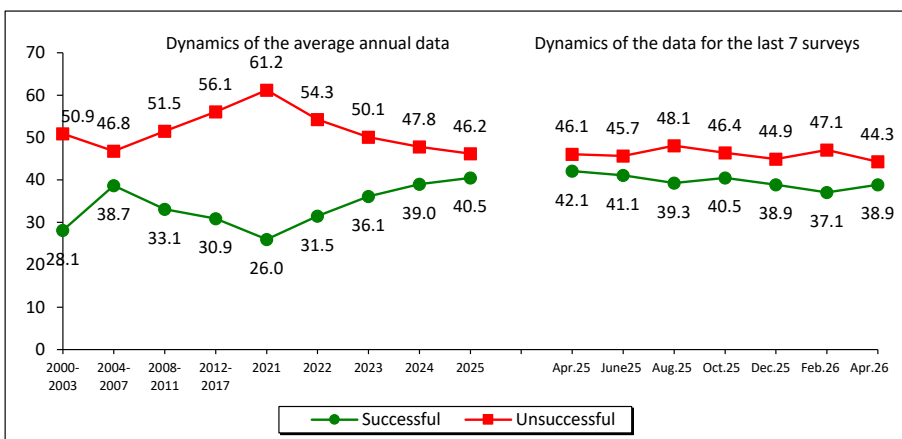


Response	Dynamics (+/-), Apr. 2026 to	
	Apr. 2025	Feb. 2026
Successful	-5	0
Unsuccessful	+2	0

The share of positive assessments of the Russian President’s success in addressing the problems of economic recovery and improving citizens’ well-being did not change significantly between February and April 2026.

From April 2025 to April 2026, the proportion of positive assessments of the head of state’s performance in tackling economic issues declined slightly – by 3 p.p., from 42 to 39%.

Economic recovery and improving citizens’ well-being



Response	Dynamics (+/-), Apr. 2026 to	
	Apr. 2025	Feb. 2026
Successful	-3	+2
Unsuccessful	-2	-3

The structure of residents' party-political preferences remains stable. The share of people whose interests are represented by the United Russia party stood at 36%, the Communist Party of the Russian Federation (CPRF) and the Liberal Democratic Party of Russia (LDPR) each at 8–9%, the Just Russia party at 3–4%, and New People at 2%.

Over the past twelve months, the level of support for United Russia decreased from 41% to 36%. At the same time, the share of respondents who believe that none of the parties represents their interests rose by 4 p.p. – from 28 to 32%.

Which party expresses your interests?  
(% of respondents; VoIRC RAS data)

Party	Dynamics of the average annual data													Dynamics of the data for the last 7 surveys							Dynamics (+/-), Apr. 2026 to			
	2011	Election to the RF State Duma 2011, fact		2012	2016	Election to the RF State Duma 2016, fact		2018	2020	Election to the RF State Duma 2020, fact		2021	2022	2023	2024	2025	Apr. 2025	June 2025	Aug. 2025	Oct. 2025	Dec. 2025	Feb. 2026	Apr. 2026	Apr. 2025
United Russia	31.1	33.4	29.1	35.4	38.0	37.9	31.5	49.8	31.7	35.2	39.5	42.9	40.3	40.5	41.6	41.2	40.5	38.1	36.1	35.7	-5	0		
CPRF	10.3	16.8	10.6	8.3	14.2	9.2	8.4	18.9	9.3	10.1	9.6	8.9	9.6	8.0	9.1	11.5	10.5	9.7	9.2	8.1	0	-1		
LDPR	7.8	15.4	7.8	10.4	21.9	9.6	9.5	7.6	9.9	7.3	7.0	7.1	8.2	7.1	9.4	8.7	7.8	8.6	8.9	7.9	+1	-1		
Just Russia – Patriots for the Truth	5.6	27.2	6.6	4.2	10.8	2.9	4.7	7.5	4.7	4.9	4.4	3.5	3.5	2.9	3.9	4.2	3.4	4.1	3.1	4.3	+1	+1		
New People*	–	–	–	–	–	–	–	5.3	2.3	1.5	1.9	2.0	2.5	3.0	2.5	1.8	2.2	2.5	2.4	2.3	-1	0		
Other	1.9	–	2.1	0.3	–	0.7	0.5	–	0.2	0.3	0.1	0.2	0.1	0.0	0.1	0.1	0.1	0.2	0.2	0.2	0	0		
None	29.4	–	31.3	29.4	–	28.5	34.2	–	33.9	30.6	26.5	25.2	25.8	27.7	24.9	23.3	24.3	26.1	29.1	31.5	+4	+2		
Difficult to answer	13.2	–	11.7	12.0	–	11.2	11.1	–	10.0	10.1	11.1	10.3	10.0	10.8	8.5	9.2	11.3	10.7	11.0	9.8	-1	-1		

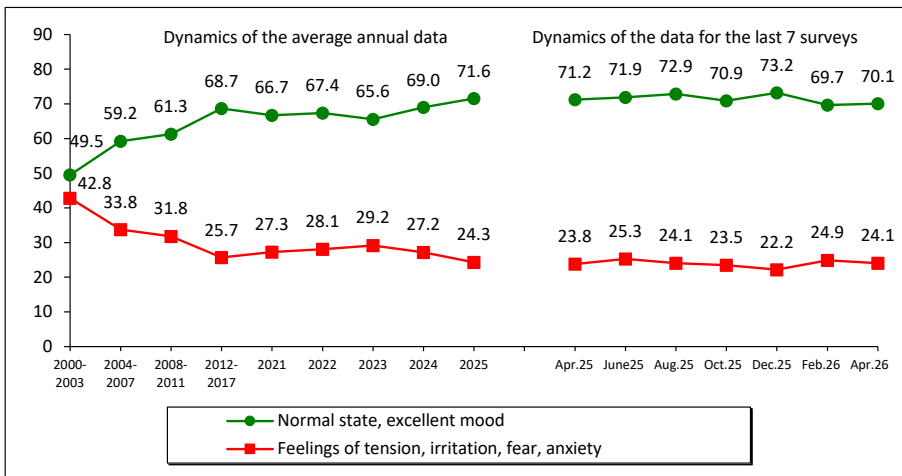
\* The New People party first won a seat in the State Duma of the Russian Federation following the elections held on September 17–19, 2021.

Estimation of social condition  
(% of respondents; VolRC RAS data)

In February–April 2026, the share of positive assessments of social mood stood at 70%; the share of negative assessments was 24–25%.

Between April 2025 and April 2026, the share of people experiencing positive and neutral feelings (“normal state, excellent mood”) remained virtually unchanged at 71–70%. The share of those experiencing negative emotions (“tension, irritation, fear, anxiety”) remained at the level of 24%.

Social mood

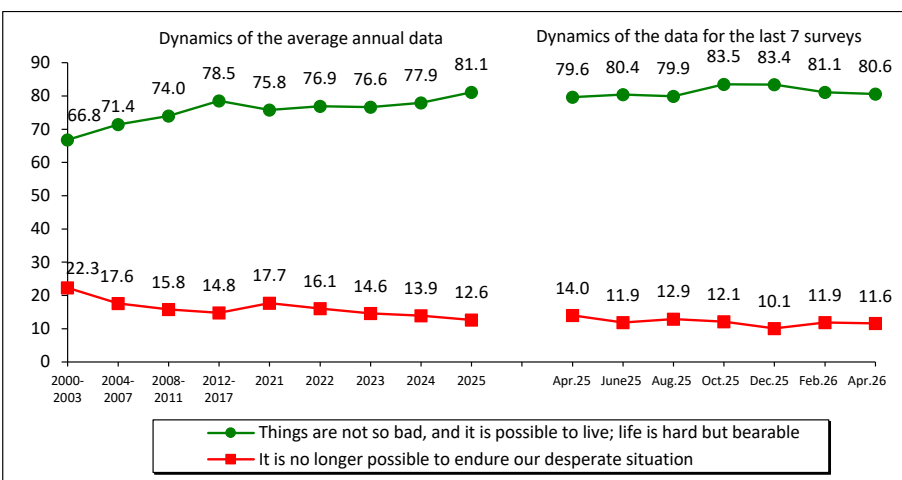


Response	Dynamics (+/-), Apr. 2026 to	
	Apr. 2025	Feb. 2026
Normal state, excellent mood	-1	0
Feelings of tension, irritation, fear, anxiety	0	-1

The reserve of patience remains at a consistently high level: 81% of the region’s residents stated in February–April 2026 that “things are not so bad and it is possible to live”. The share of those who believe that “it is no longer possible to endure” their desperate situation stood at 12%.

In April 2026, compared with April 2025, no significant changes are observed in the reserve of patience indicator.

Reserve of patience

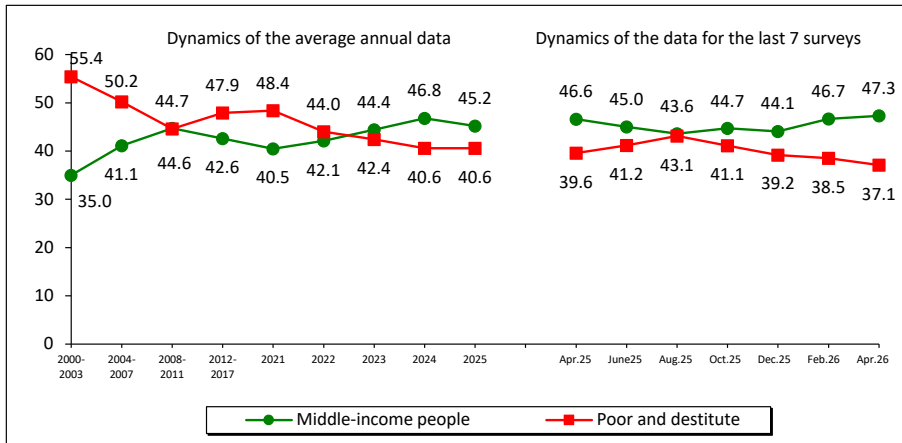


Response	Dynamics (+/-), Apr. 2026 to	
	Apr. 2025	Feb. 2026
Things are not so bad, and it is possible to live; life is hard but bearable	+1	-1
It is no longer possible to endure our desperate situation	-2	0

As in February, in April 2026 the share of the region’s residents who subjectively identify themselves as belonging to the “middle-income” category stood at 47%. The share of those identifying as “poor and destitute” also remained unchanged (37–38%).

In April 2026, compared with April 2025, the share of those considering themselves “poor and destitute” decreased by 3 p.p. (from 40 to 37%).

**Social self-identification**



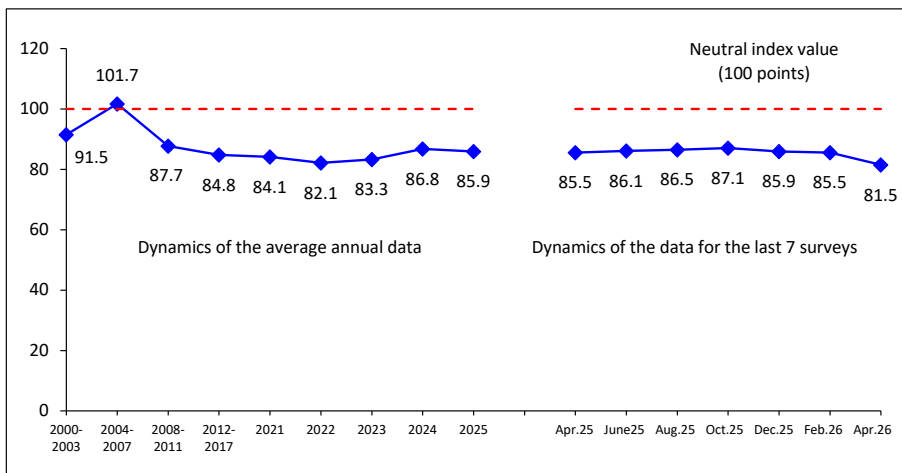
Response	Dynamics (+/-), Apr. 2026 to	
	Apr. 2025	Feb. 2026
Share of those considering themselves middle-income	+1	+1
Share of those considering themselves poor and destitute	-3	-1

Question wording: “Which category do you belong to, in your opinion?”

Between February and April 2026, the value of the Consumer Sentiment Index (CSI) decreased from 86 to 82 points.

The year-on-year dynamics also show a deterioration: the CSI indicator fell from 86 to 82 points.

**Consumer Sentiment Index (CSI, points; VoIRC RAS data for the Vologda Region)**



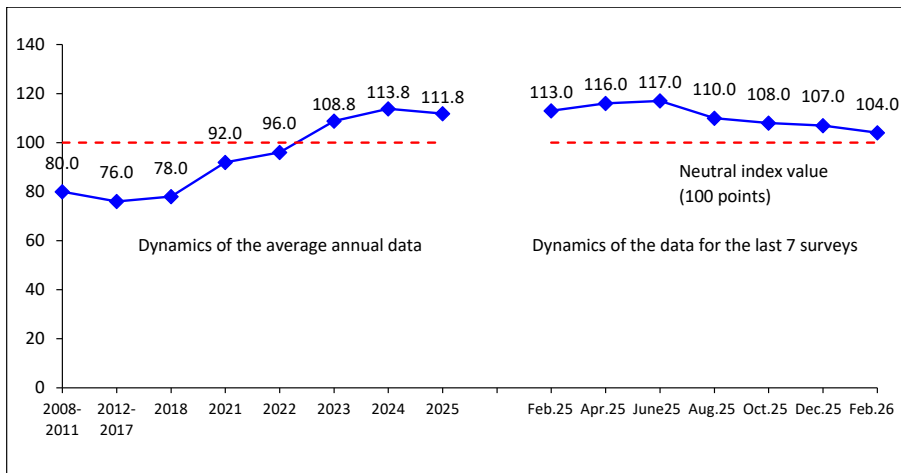
Response	Dynamics (+/-), Apr. 2026 to	
	Apr. 2025	Feb. 2026
Index value, points	-4	-4

**For reference:**

According to the latest data from nationwide surveys by Levada-Center\* (for the period December 2025–February 2026), the Consumer Sentiment Index declined by 3 points, from 107 to 104 points.

Year-on-year (February 2026 compared to February 2025), the CSI fell by 9 points, from 113 to 104 points.

Consumer Sentiment Index (CSI, points; Levada-Center\* data for Russia<sup>5</sup>)



Response	Dynamics (+/-), Feb. 2026 to	
	Feb. 2025	Dec. 2025
Index value, points	-9	-3

The index has been calculated since 2008.  
The latest data are for February 2026.

Source: Levada Center\* data. Available at: <https://www.levada.ru/indikatory/sotsialno-ekonomicheskie-indikatory/>

Between February and April 2026, no significant changes in the dynamics of the share of positive social mood assessments are observed in the majority of socio-demographic population groups, with the exception of the top 20% income group, where the share of positive assessments declined by 4 p.p.

Over the year (from April 2025 to April 2026), the share of positive social mood assessments decreased in 5 of the 14 socio-demographic groups. The greatest decline is observed among young people under 30 (by 9 p.p.), the bottom 20% income group (by 6 p.p.), as well as people with secondary and incomplete secondary education (by 5 p.p.). At the same time, in the majority of groups (9 out of 14), the share of positive assessments remained unchanged.

<sup>5</sup> Since March 2025, Levada-Center\* has updated its CSI data. The CSI in Russia has been calculated since 1993 based on five questions, similar to the index developed in the 1940s by the Institute for Social Research at the University of Michigan. Individual indices for each question are calculated as the difference between the shares of positive and negative responses plus 100. The aggregate CSI is the arithmetic mean of the individual indices (range 0–200, where >100 indicates a predominance of positive assessments). In 2009, the CSI was pegged to the March 2008 values (base 100%), which was associated with a change in the survey methodology and the economic crisis. However, this led to the index reflecting changes only relative to 2008. From March 2025, a decision was made to revert to the original CSI calculation methodology, abandoning the peg to 2008, since in 2023 many indicators exceeded the 2008 maxima and the old version of the index ceased to adequately reflect the current situation. The return to the original methodology is intended to resolve this problem. Source: Updated Consumer Sentiment Index: February 2025 indicators. Available at: <https://www.levada.ru/2025/03/26/obnovlennyj-indeks-potrebitelskihnastroenij-pokazateli-fevralya-2025-goda/>

\* Included in the register of foreign agents.

Social mood in various social groups (response option “Excellent mood, normal, steady state”, % of respondents; VoIRC RAS data)

Population group	Dynamics of the average annual data									Dynamics of the data for the last 7 surveys							Dynamics (+/-), Apr. 2026 to	
	2007	2012	2018	2021	2022	2023	2024	2025	Apr. 2025	June 2025	Aug. 2025	Oct. 2025	Dec. 2025	Feb. 2026	Apr. 2026	Apr. 2025	Feb. 2026	
<b>Gender</b>																		
Men	65.9	69.1	72.8	65.7	66.8	65.5	66.5	70.7	68.8	71.6	72.1	68.2	73.3	69.1	71.9	+3	+3	
Women	61.7	65.8	69.8	67.4	67.9	65.7	70.9	72.3	73.1	72.2	73.5	73.1	73.1	70.1	68.7	-4	-1	
<b>Age</b>																		
Under 30	71.3	72.3	79.9	73.5	77.6	75.0	76.6	76.8	76.7	76.7	78.1	75.2	74.3	69.5	67.6	-9	-2	
30–55	64.8	67.9	72.6	69.5	69.4	68.8	71.3	74.3	74.1	74.1	74.9	73.9	78.4	73.6	73.1	-1	-1	
Over 55	54.8	62.1	65.2	60.5	61.1	58.2	63.3	66.5	65.8	67.6	68.6	65.9	66.6	64.9	67.5	+2	+3	
<b>Education</b>																		
Secondary and incomplete secondary	58.4	57.2	64.8	62.1	64.6	62.0	64.6	67.2	65.6	68.4	70.3	68.4	66.1	60.6	60.4	-5	0	
Secondary vocational	64.6	66.7	72.1	66.7	68.3	66.1	70.3	73.6	74.8	74.1	73.6	71.4	75.6	71.6	74.7	0	+3	
Higher and incomplete higher	68.6	77.0	76.7	71.5	69.5	68.8	72.3	73.9	73.4	73.0	74.7	73.1	77.6	74.7	74.0	+1	-1	
<b>Income group</b>																		
Bottom 20%	51.6	51.5	57.2	54.6	57.0	50.1	53.5	55.2	56.9	56.1	58.3	53.3	50.7	48.2	51.3	-6	+3	
Middle 60%	62.9	68.7	72.1	67.3	68.1	67.4	70.7	73.2	72.6	74.4	73.1	73.1	75.2	72.2	72.7	0	+1	
Top 20%	74.9	81.1	82.4	79.9	78.3	73.9	77.6	83.6	81.3	84.1	83.8	84.8	89.4	87.7	83.4	+2	-4	
<b>Territory</b>																		
Vologda	63.1	73.6	71.0	60.3	59.8	59.6	66.0	70.2	68.6	69.5	72.9	71.4	71.9	68.1	68.8	0	+1	
Cherepovets	68.1	76.2	75.7	71.0	71.2	68.1	69.8	73.1	71.5	72.5	75.0	73.2	76.3	73.0	73.5	+2	+1	
Districts	61.6	59.8	68.6	67.8	69.5	67.7	70.2	71.6	72.7	73.1	71.6	69.3	72.2	68.7	69.0	-4	0	
Region	63.6	67.3	71.2	66.6	67.4	65.6	69.0	71.6	71.2	71.9	72.9	70.9	73.2	69.7	70.1	-1	0	
Total number of groups: positive changes / no changes / negative changes															14:	14:		
															0 / 9	0 / 13		
															/ 5	/ 1		

## SUMMARY

The latest wave of public opinion monitoring was conducted between February and April 2026. **On the whole, no significant changes are observed in most indicators over these two months.** However, when compared with data from a year earlier (April 2025 vs. April 2026), a buildup of moderately negative dynamics is recorded across a number of key indicators of the region’s population’s social well-being and socio-political attitudes.

Over the year (from April 2025 to April 2026), the approval rating of the Russian President declined slightly, from 64 to 61%. At the same time, the deterioration in assessments affected all key areas of his performance: strengthening Russia’s international standing (a decline of 5 p.p.), maintaining order in the country (by 4 p.p.), protecting democracy and citizens’ freedoms (by 5 p.p.), and addressing economic issues and improving the population’s well-being (by 3 p.p.).

That said, it should be emphasized that the dynamics of Vologda Region residents' attitudes toward the head of state's performance reflect nationwide trends. **According to VCIOM data, approval of the head of state fell from 77 to 68% over the year, and according to Levada-Center\* data, from 87 to 80%. In this sense, the dynamics of public opinion in the region appear relatively more favorable compared to national trends.**

**The structure of residents' party sympathies in the region also underwent changes over the year. The level of support for the United Russia party decreased from 41 to 36%. At the same time, the share of respondents stating that none of the parties represents their interests rose by 4 p.p. (from 28 to 32%).**

**Across the region as a whole, the share of positive and neutral mood assessments ("normal, excellent") remained virtually unchanged over the year, at 71–70%. However, the averaged figures conceal divergent dynamics across socio-demographic groups. The greatest decline in the share of positive assessments was recorded among young people under 30 (-9 p.p.), the bottom 20% of the population by income (-6 p.p.), and people with secondary and incomplete secondary education (-5 p.p.).**

**Self-assessments of living standards exhibit contradictory dynamics. The share of those considering themselves "middle-income" remained at 47%, while the share of those identifying as "poor and destitute" fell by 3 p.p. over the year (from 40 to 37%). However, the most alarming signal comes from the dynamics of the Consumer Sentiment Index (CSI). Over the year of measurements, the indicator dropped from 86 to 82 points, and over the past two months (February–April 2026) the decline amounted to 4 points. This trend is corroborated by nationwide data (Levada-Center\*: an annual decline in the CSI from 113 to 104 points). The deterioration of consumer expectations against a backdrop of stable or slightly declining assessments of current social well-being may indicate the formation of a deferred negative backdrop in the perception of the future – the population is increasingly skeptical about the prospects for improving its prosperity.**

Thus, April 2026 marks a transition from a phase of consistently high indicators (characteristic of 2023–2024 and the first half of 2025) to a phase of accumulating negative changes. This suggests that while the external backdrop of social stability is being maintained (high reserve of patience, predominance of positive and neutral mood), there is a growing public demand for changes in the dynamics of living standards and quality of life – a development that is entirely natural against the backdrop of fatigue and the population's habituation to living under the conditions of the special military operation, something experts have been speaking about since late 2025<sup>6</sup>.

Prepared by K.E. Kosygina and I.M. Bakhvalova

\* Included in the register of foreign agents.

<sup>6</sup> See, for example: Obukhov S.P., Mikhailchuk A.M., Bogachev A.M., Strelkov D.A., Khamadieva T.V., Chervontsev A.V. Results of 2025 from V.V. Putin. Express analysis of the message to Russian society and foreign opponents. Available at: <https://kprf.ru/politindx/239901.html?ysclid=mlhmrkgapk916136109>

Alfimov V. From salary to victory: How Russian society changed over the year (interview with VCIOM Director V. Fedorov). Available at: <https://www.kp.ru/daily/27763.3/5191948/?ysclid=mkgituc55z530676123>